

# WebEOC<sup>®</sup>

## Product Announcement

### Version 8.2

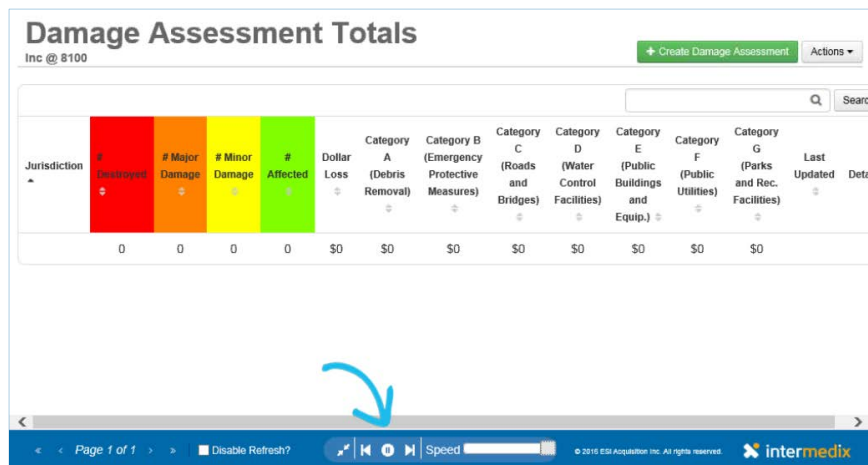
This announcement describes changes made to the WebEOC platform for the 8.2 release. If you have questions about changes not covered in this document, more information is available through Online Help, the [Client Hub](#), or by contacting your Client Services Manager.

## User Features

### New Full Screen and Presentation Modes

Now you can further enhance your WebEOC experience by viewing the solution in either Standard or Full Screen mode, depending on your preference. When in Full Screen mode, the header and open tabs bar are hidden, giving the user a greater amount of screen to work with.

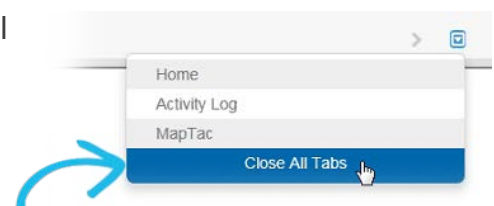
Various controls are available when in this full screen mode, allowing you to manually navigate between boards. Selecting the play button activates Presentation mode, giving you the ability to automatically scroll between boards, pause the presentation, and set the transition speed from one board to the next.



This feature is particularly useful when projecting WebEOC boards on a screen and providing situational information to, for instance, all users within the Emergency Operations Center.

### New Close All Tabs Option



If you have multiple tabs open and would like to close them all simultaneously, you can navigate to the open tabs menu button on the right side of the tabs bar and click **Close All Tabs**. This option is always at the end of the list, making it consistently easy to locate and access.



## Simplified Selection of Users in Messages

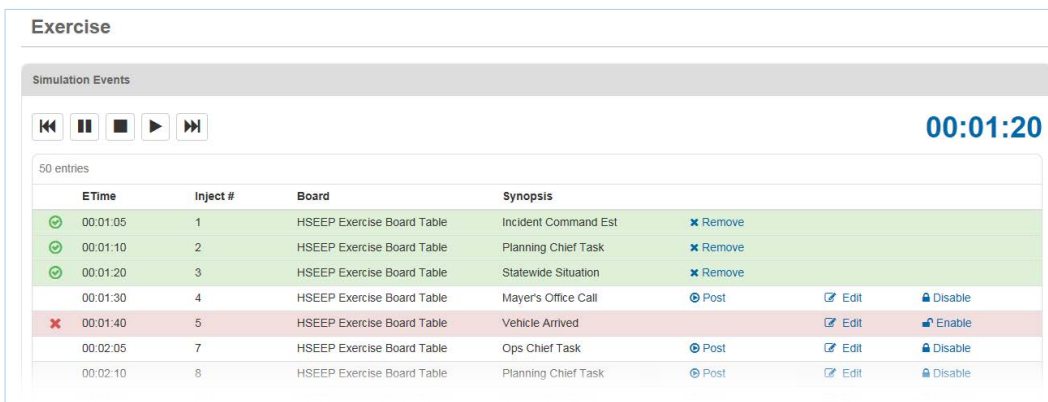
When selecting users to send a new message to using the Messages tool, in addition to locating users by username, you can now search for users by name. This new option allows you to quickly locate the individual who should receive the message, so all you need to know is the user's name and not their unique WebEOC username.

## Implemented Color Change to Control Panel Icon for Menu Updates

If a board assigned to a menu has been updated with new data, indicated by a star icon next to the applicable item or board, the control panel icon becomes light blue in color . As soon as the item or board is viewed, the icon returns to its natural gray hue .

## Updated User Interface for Simulator

The Simulator has undergone changes to improve user experience with the tool. Most notably, the styles used in Simulator now align with those introduced in the WebEOC 8.0 user interface.



ETime	Inject #	Board	Synopsis		
00:01:05	1	HSEEP Exercise Board Table	Incident Command Est	✖ Remove	
00:01:10	2	HSEEP Exercise Board Table	Planning Chief Task	✖ Remove	
00:01:20	3	HSEEP Exercise Board Table	Statewide Situation	✖ Remove	
00:01:30	4	HSEEP Exercise Board Table	Mayer's Office Call	📄 Post	✎ Edit   🔒 Disable
✖ 00:01:40	5	HSEEP Exercise Board Table	Vehicle Arrived		✎ Edit   🔒 Enable
00:02:05	7	HSEEP Exercise Board Table	Ops Chief Task	📄 Post	✎ Edit   🔒 Disable
00:02:10	8	HSEEP Exercise Board Table	Planning Chief Task	📄 Post	✎ Edit   🔒 Disable

## Improved Management of New Sessions

If you attempt to open a new session of WebEOC when you are already logged in to the solution via another tab or browser window, the system clearly alerts you that another session is currently running in the same browser. A prompt allows you to proceed with the log in, which will log you out of the current session, or close the window and keep the existing session open.

## Expanded Size of Control Panel Menu

The width of the control panel menu has been expanded, allowing for the proper display of boards with longer names.

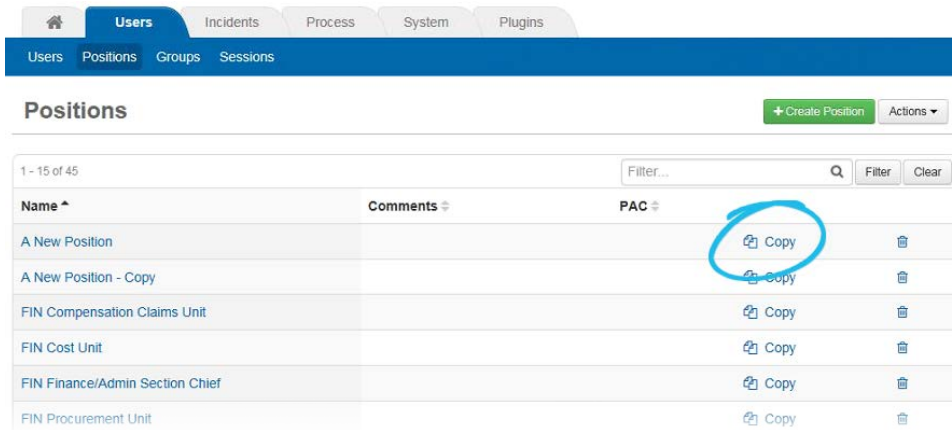
## Added Ability to Click Control Panel Notifications

Similar to when a notification is received from the Messages plugin, when a notification generated from a status board appears on the control panel, it contains a clickable link. Clicking the link takes you to the board record so you can view and interact directly within the status board from which it originated.

## Administrator Features

### New Copy Position Feature

When creating positions, an administrator can choose to copy an existing position, speeding up the position creation process. The copy function duplicates the position's name and group assignments only. Assigned users, PAC codes, comments, and colors are not copied, letting administrators decide the particular individuals who should be assigned to the new position.

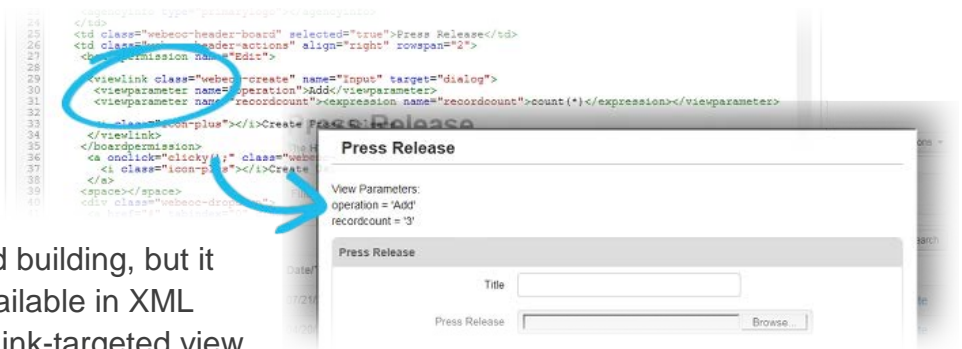


### New REST API

A Representational State Transfer (REST) Application Programming Interface (API) for exchanging data with external applications is now offered with WebEOC. Designed to be easy-to-use, understand, and document, the REST API can be an intuitive alternative to the existing SOAP-based API.

### Enabled Passing of String Values Through Viewlinks

A new `<viewparameter>` element allows arbitrary parameters to pass from one view to the next using a viewlink. Easily added to a board's List or Input view, each `<viewparameter>` element is given a name, and the text embedded within the element contains the value of the parameter.



This feature not only helps support more advanced board building, but it also makes the parameter available in XML data when you open the viewlink-targeted view.

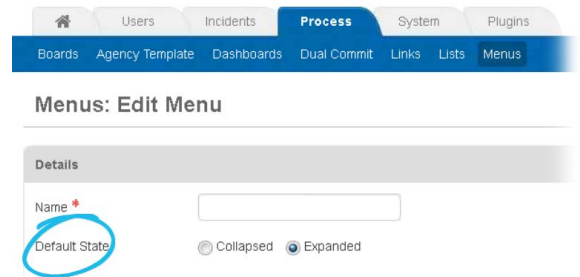
### Exact Matches Returned When Using Filter List Drop-downs

When using the `<filterlistdropdown/>` tag, the filtered data now returns exact matches only, as opposed to partial matches.

## Added Ability to Define Menu Presentation Default

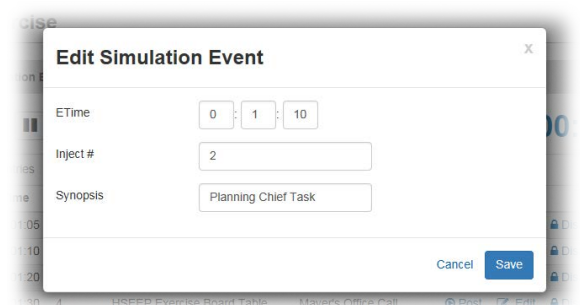
When creating or editing a menu, administrators can specify whether the menu should be collapsed or expanded by default.

Initially, **Collapsed** is set as the default option. Configuring the default state of a menu is done through **Admin: Process: Menu**.



## Enhanced Simulator Options and Capabilities

If details for an inject event need to be updated as a simulation develops, assigned users now have the ability to edit the **ETime**, **Inject #**, and **Synopsis** while the simulation is running. This functionality makes simulations even more effective by allowing simulation changes to be made in the moment, as needed, during trainings or exercises.



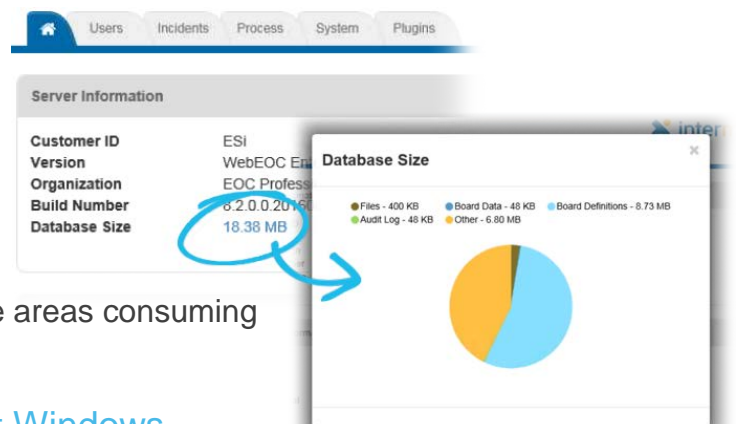
Additionally, administrators can now define an integer for the **intValue** field when adding or editing an injection in the Simulator.



## Provided Visibility into Database Size

From the *Admin* window, administrators can easily determine the size of their WebEOC database.

When selected, usage is broken down by category—Files, Board Data, Board Definitions, Audit Logs, and Other applicable system areas—to help you quickly identify the areas consuming the most space.



## Included Board Name on Import/Export Windows

Similar to the functionality seen in WebEOC versions 7.x, the board name now appears on the *Import/Export Board* and *Import/Export Data* windows, verifying that you are accessing the correct board when performing these actions.

## Removed WebEOC Required Fields Check

The browser used to access WebEOC, not WebEOC itself, now checks and verifies that required fields for a record or entry are completed and prompts the user accordingly.

## System Fields Labeled in Reporter

In Reporter, all system fields are now labeled so they can be localized appropriately.

## Alphabetized Admin Drop-down Menus

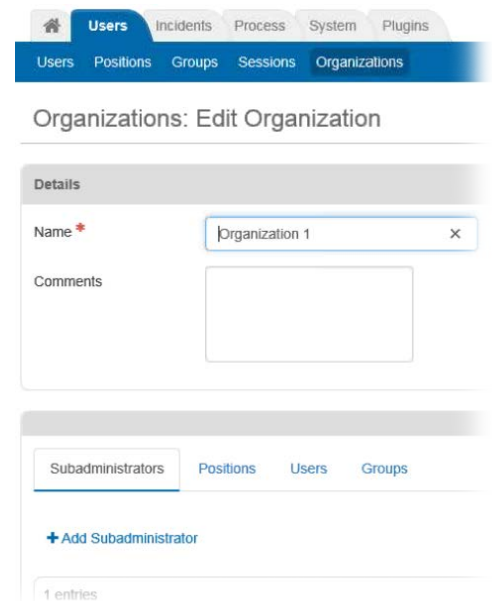
Items in drop-down menus within the *Admin* windows have been alphabetized, making it easier to locate the appropriate options.

## Enterprise Features

### New Organization Component

For Enterprise users, a new **Organization** subtab is available in the *Admin* window's **Users** tab. This new component helps with the management of sub-administrators and their associated permissions.

When you create an organization, you can add sub-administrators, positions, users, and groups to it. In turn, when you create sub-administrator users accounts, you can assign them to an organization. By assigning an organization, you are also assigning the sub-administrator the ability to manage the organization's assigned users, assign positions, and assign groups. This new process ultimately allows multiple sub-administrators to share responsibility for the same users, an option not previously offered.



### Enhanced Field Mapping Using Data Manager

When mapping fields in the Board Data Manager, the field drop-downs only list fields that have not been mapped. In this way, administrators can only select unmapped fields during configuration, expediting the overall field mapping process.

### Improved Export of System Fields in Data Manager

When exporting from a board view, any system field that is defined in the given view is exported using the Board Data Manager; this includes the **positionname** and **username** fields. If the field is not found in the board view, the data does not appear in the exported spreadsheet. When exporting from Administration, all system fields are now exported by default.

	A	B	C	D	E	F	G	H	I
1	data1	entrydate	title	published_1	approved_1	file1Name	approval_status	positionname	username
2	6296	6/29/2016 15:55					Pending Approval	CMD EOC Director	
3	6295	6/28/2016 14:03					Pending Approval	CMD EOC Director	Connect User
4	6293	6/22/2016 16:25	Press Release One				Published	CMD EOC Director	WebEOCAdministrator
5	6294	6/22/2016 16:28	Press Release Two				Not Approved	CMD EOC Director	WebEOCAdministrator